

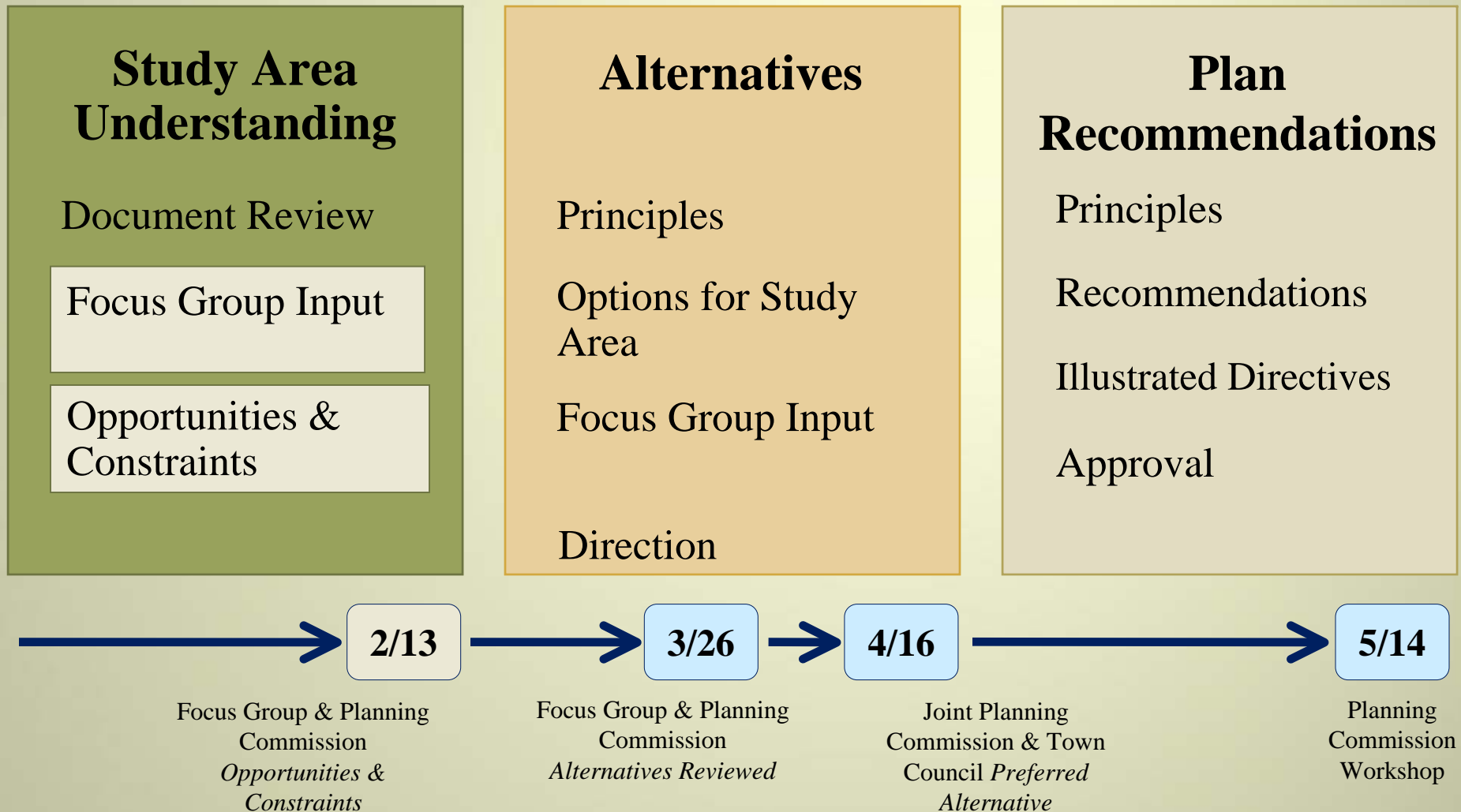
# Town of Mammoth Lakes

## EAST OPEN SPACE STREAM CORRIDOR Planning Study



# Process and Study Goals

## East OSSC Study



# Process and Study Goals

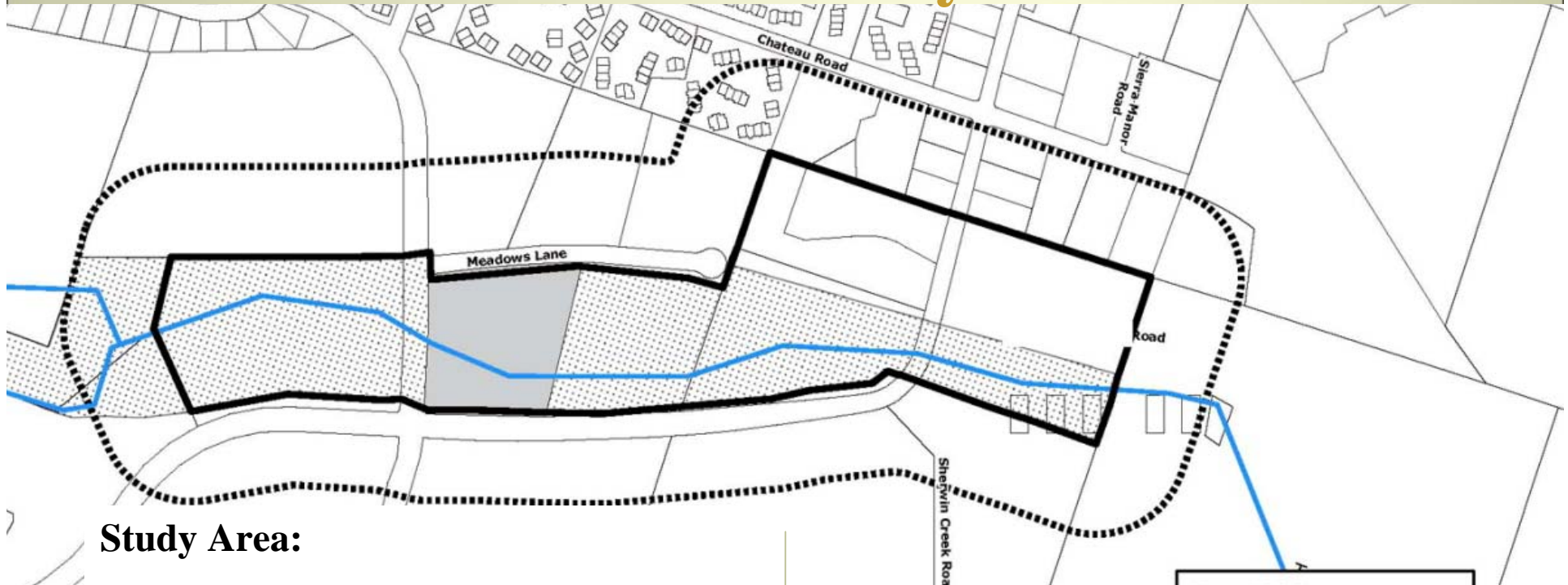
## Realizing the Vision

### The General Plan Process:

1. Analysis of Current Conditions
2. Identification of Community & Town Vision
3. Celebrate Arts, Culture, Natural History
4. Conservation
5. Recreation & Open Space
6. Actions to Achieve Goals

# Process and Study Goals

## East OSSC Study Area



### Study Area:

North – Meadow Lane / Mammoth Creek Park  
South – Old Mammoth Road  
West – Mammoth Creek Meadow  
East – United States Forest Service

### Sphere of Influence:

North – Condos, Commercial, Lodging  
South – Snowcreek Golf Course  
West – Mammoth Creek Meadow  
East – United States Forest Service

# Process and Study Goals

## OSSC Planning Study Goals

- Provide analysis and study for the eastern part of the Mammoth Creek corridor, to assist with evaluation of The Sherwin project application
- Provide opportunities for public input about planning issues concerning this part of the Creek Corridor
- Develop recommendations for ways to enhance access, connectivity, user experience and natural resource values along the corridor that respect this key community asset.

# Study Area and Context

## General Plan Goals and Polices for Mammoth Creek Corridor

### COMMUNITY VISION

1. Sustainability and continuity of our unique relationship with the natural environment.
5. Protecting the surrounding natural environment
7. Offering a variety of transportation options that emphasize connectivity, convenience and alternatives to use of personal vehicles with a strong pedestrian emphasis.

### ECONOMY

- E.2. Achieve sustainable tourism by building on the area's natural beauty, recreational, cultural, and historic assets.

# Study Area and Context

## General Plan Goals and Polices for Mammoth Creek Corridor

### **ARTS, CULTURE, HERITAGE AND NATURAL HISTORY**

- A.1. Be stewards of Mammoth's unique natural environment.
- A.2. Be a vibrant cultural center by weaving arts and local heritage and the area's unique natural history into everyday life.
- A.3. Encourage public art and cultural expression throughout the community.

### **COMMUNITY DESIGN**

- C.3. Ensure safe and attractive public spaces, including sidewalks, trails, parks and streets.

# Study Area and Context

## General Plan Goals and Policies for Mammoth Creek Corridor

### MOBILITY

- M.1. Develop and implement a townwide way-finding system.
- M.3. Emphasize feet first, public transportation second, and car last in planning the community transportation system while still meeting Level of Service standards.
- M.4. Encourage feet first by providing a linked year-round recreational and commuter trail system that is safe and comprehensive.
- M.7. Maintain and improve safe and efficient movement of people, traffic, and goods in a manner consistent with the feet first initiative.



# Study Area and Context

## General Plan Goals and Policies for Mammoth Creek Corridor

### **PARKS, OPEN SPACE, AND RECREATION**

- P.1. Maintain parks and open space within and adjacent to town for outdoor recreation and contemplation.
- P.2. Provide additional parks within town.
- P.3. Create a Master Plan for an integrated trail system that will maintain and enhance convenient public access to public lands from town.
- P.4. Provide and encourage a wide variety of outdoor and indoor recreation readily accessible to residents and visitors of all ages.
- P.5. Link parks and open space with a well-designed yearround network of public corridors and trails within and surrounding Mammoth Lakes.

# Study Area and Context

## General Plan Goals and Policies for Mammoth Creek Corridor

### RESOURCE MANAGEMENT AND CONSERVATION

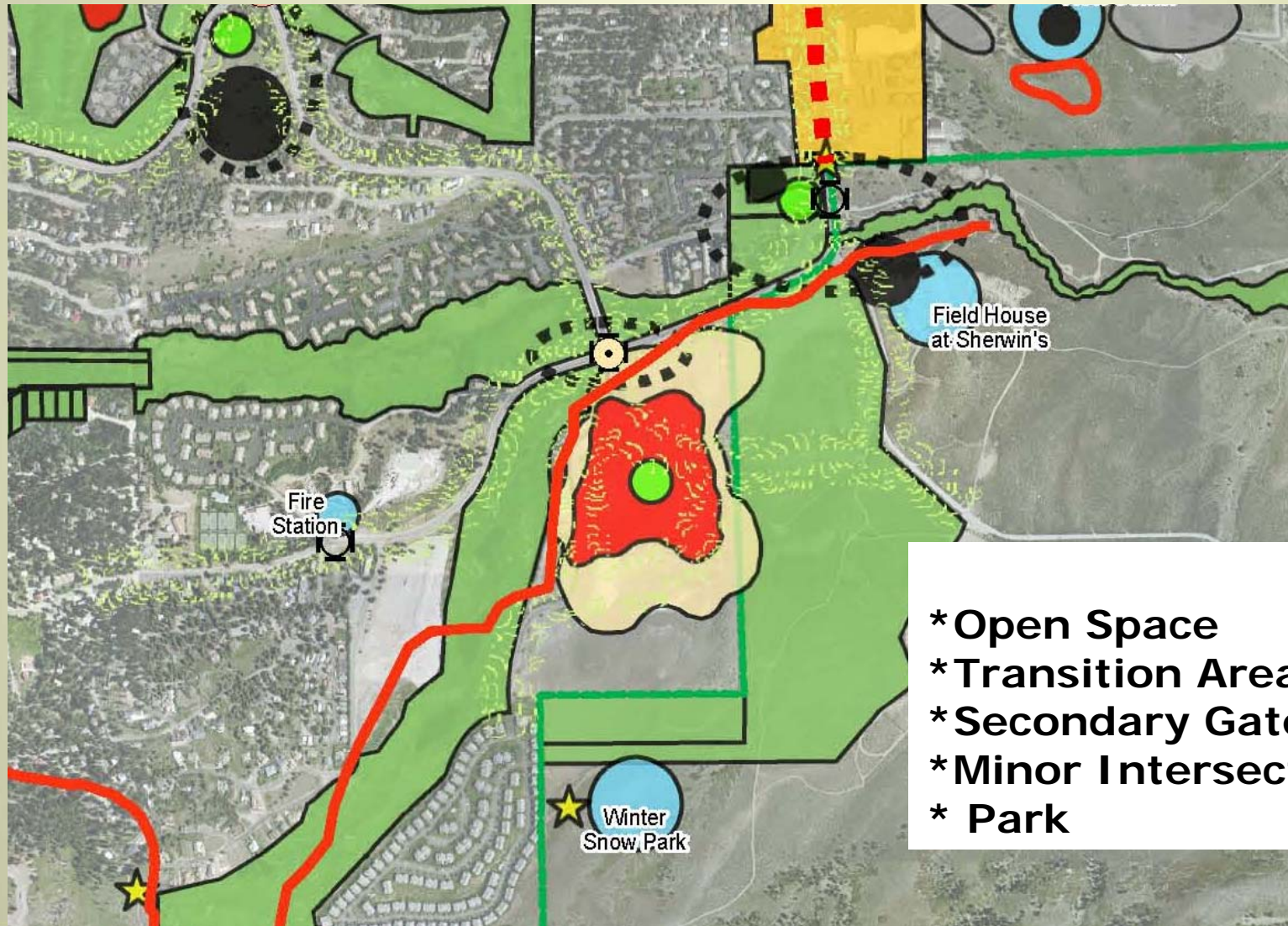
- R.1. Be stewards of habitat, wildlife, fisheries, forests and vegetation resources of significant biological, ecological, aesthetic and recreational value.
- R.2. Maintain a healthy regional natural ecosystem and provide stewardship for wetlands, wet meadows and riparian areas from development-related impacts.
- R.3. Preserve and enhance the exceptional natural, scenic and recreational value of Mammoth Creek.
- R.4. Conserve and enhance the quality and quantity of Mammoth Lakes' water resources.
- R.5. Minimize erosion and sedimentation.

# Study Area and Context



# Study Area and Context

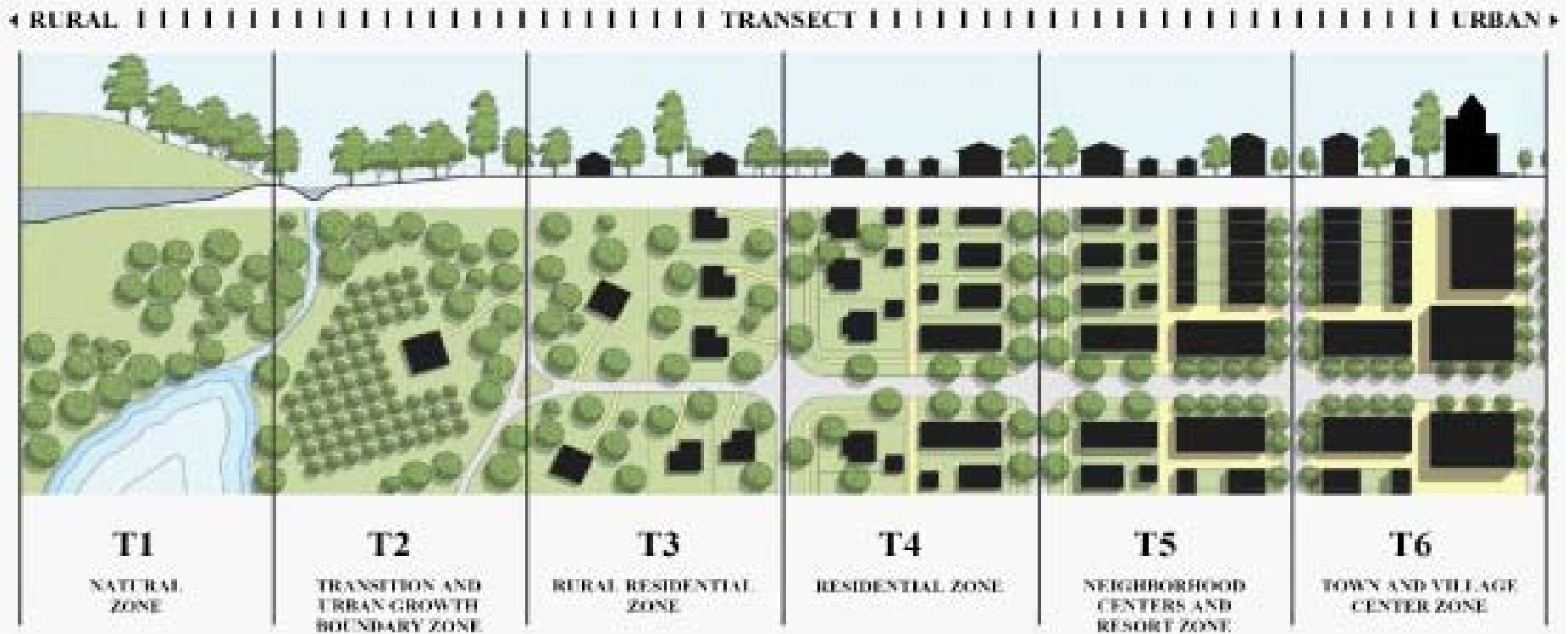
## Physical Development Diagram



- \* Open Space
- \* Transition Area
- \* Secondary Gateway
- \* Minor Intersection
- \* Park

# Study Area and Context

## Transect Diagram



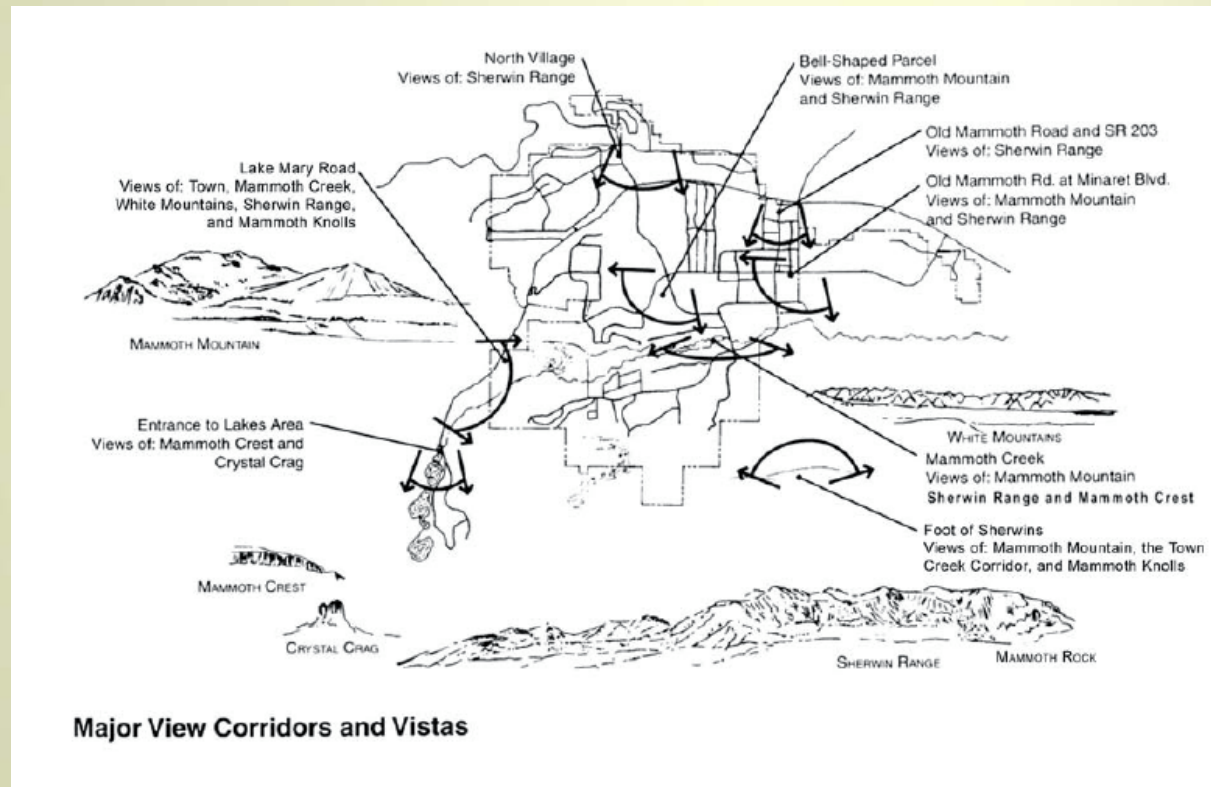
Urban Uses in North and East



Open Space/ Natural Character to South and West

# Study Area and Context

## Views and Experience From Corridor



## Mammoth Mountain to White Mountains

# Issues and Opportunities

## Users and Activity Zones Groups

- Trail Users - Hikers, Cyclists, Nordic, Dog Walkers, Commuters
- Park Users - Mammoth Creek Park existing and future uses
- Creek Users - Anglers
- Passive Open Space Users - The Sherwin Open Space, Birders

# Issues and Opportunities

## Users and Activity Zones Groups

- What constitutes “public” use?
- How do you negotiate private property and respect those uses, while providing access?
- Possibility for conflicts based on different access needs and objectives



# Issues and Opportunities

## Mobility and Connectivity

### Existing and Proposed Trails and Bikeway Components



#### Sidewalks

- Existing
- - - Proposed

#### Trails

- Existing Path
- - - Proposed Path
- Existing Dirt Trail
- - - Proposed Access

#### Roads

- Existing Road, No Bike Lane
- - - Proposed Connector, No Bike Lane  
(Connector in Commercial Area Includes Sidewalk)
- Existing Bike Lane
- - - Planned Bike Lane

#### Parking Facilities

- Planned Parking
- Planned Staging Area
- Existing Parking
- Planned Trail Head

# Issues and Opportunities

## Mobility and Connectivity

1. Design
2. Winter vs. Summer Locations
3. Maintenance
4. Way finding



# Issues and Opportunities

## Mobility and Connectivity

- Circulation Improvements
  - Roundabout at Minaret/Old Mammoth Road
- Transit, Bus stops
  - Need for Year-round sidewalks to facilitate walking
- Mammoth Creek Crossings
  - Location, Form, and Function

# Issues and Opportunities

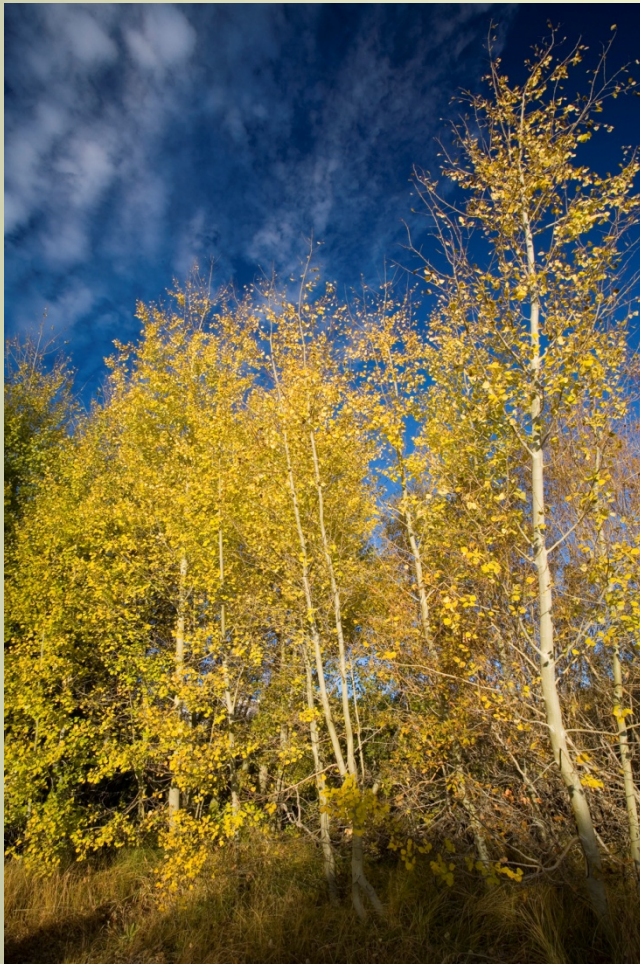
## Habitat Restoration & Preservation

- Currently Various Levels
- Ensure Natural Environment in Town
- Constraints



# Issues and Opportunities

## Cultural and Historic Resources

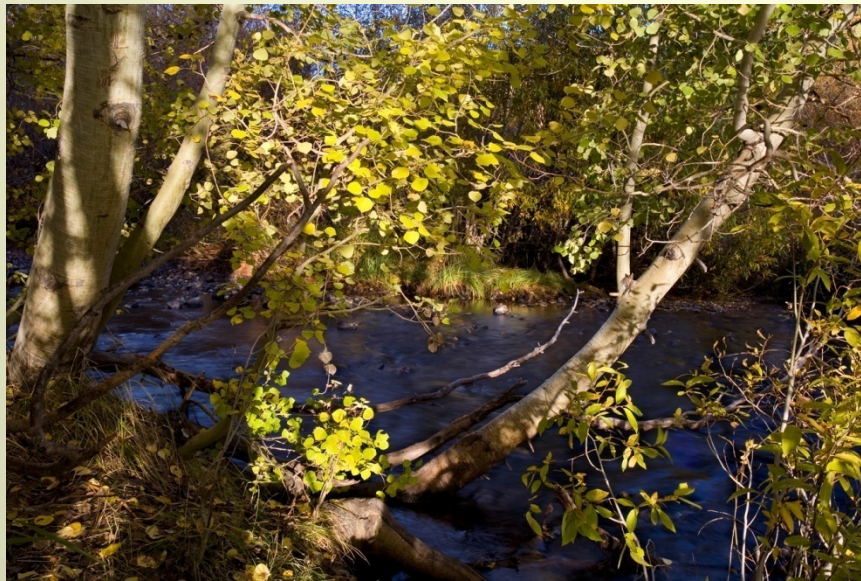


- Hayden Cabin / Museum
- Paiute Indian Interpretative Area

# Issues and Opportunities

## Interpretative Aspects

- Snowcreek Interpretive Center
- Signage – Location & Extent
- Interface with Arts & Cultural



# Issues and Opportunities

## Education Uses

- Creek Access to & from Schools
  - Kids biggest concern (CAMP Winter)
- The Sherwin/Cousteau Environmental Education Center



# Issues and Opportunities

## Public Art

- Location
- Size & Theme
- Utilize Nature's Art





# Issues and Opportunities

## Nature's Artery To & From Mammoth

- Accessing the Public Lands
- Nature Embracing the Town



# East Open Space Stream Corridor

## Public Comments & Ideas

